


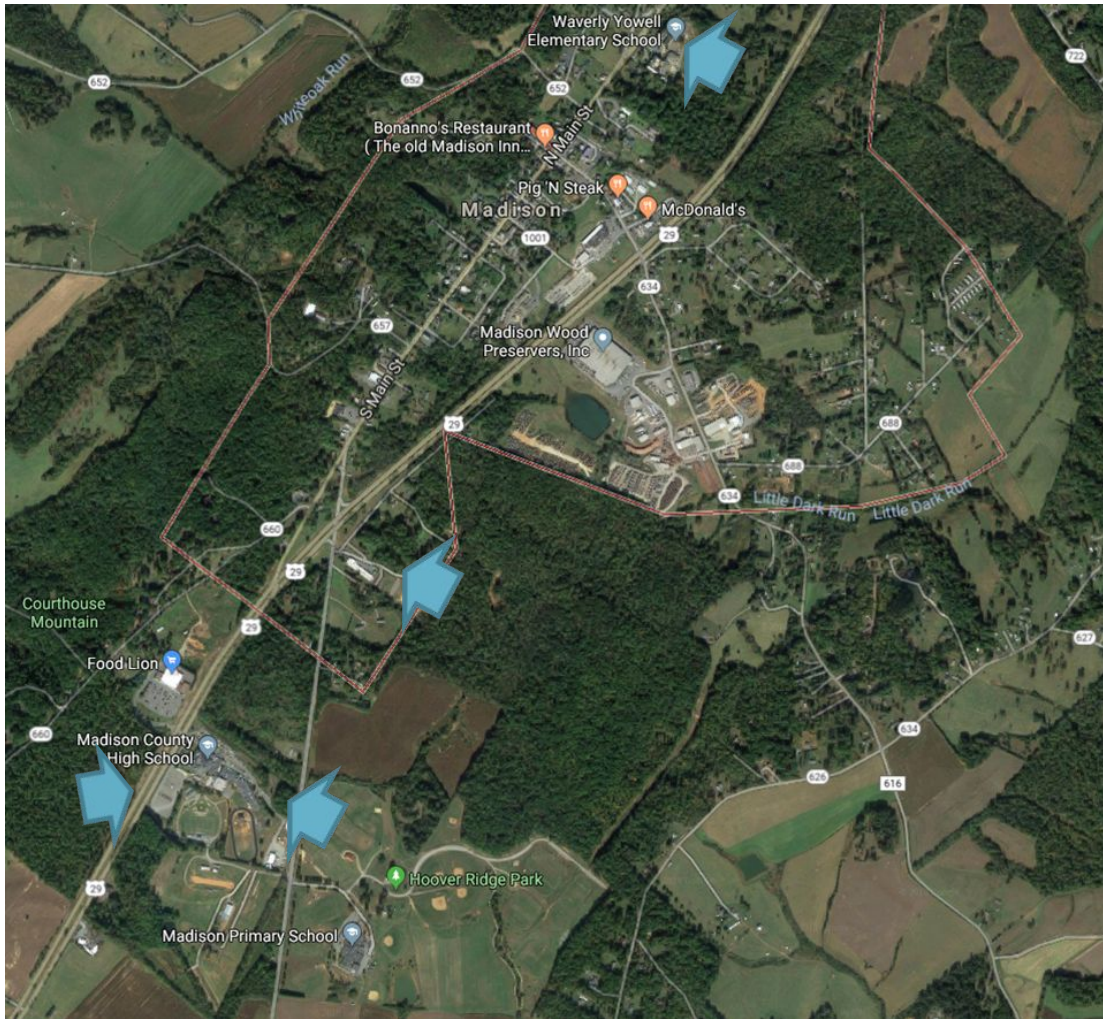


Madison County Public
Schools
Capital Improvement
Plan

2018-2028



Updated: 2/28/2022



Overview

Madison County Public School Division's Capital Improvement Plan is an integral component of the total Madison County Capital Improvement Program. The Division Capital Improvement Plan (CIP) is a working document of the Madison County Board of Supervisors and Madison County School Board.

This ten-year CIP document is an indication of the division's facility needs for capital projects generally costing over \$20,000. Projects desired for consideration, expected timing, and approximate costs for each project and facility area are included. At the building level, administrators and teachers identify needs. The division assesses all facility needs, inside and outside. The CIP committee reviews needs and scores priorities using a rubric. The prioritized needs are then submitted for inclusion in the ten-year capital improvement plan.

School and administrative personnel are tasked with obtaining cost estimates, further defining needs, and answering questions. Alterations to the plan may occur at the building, division, or governing body level. Once capital projects are approved by the CIP committee and governing boards, the County and the School Division maintain the actual accounts with monthly reviews at CIP meetings of expenditures and project management. The School Division awards the contracts and monitors progress.

The School Division is responsible for verifying that all work is completed within the scope and approved expenditures. The School Division relies on the expertise of combined school personnel, county personnel, and contracted professionals. Upon satisfactory work completion, the school staff authorizes and generates payments.

Madison Primary School
158 Primary School Drive, Madison, VA 22727
Phone 540-948-3781
<https://va02207963.schoolwires.net/mps>



Madison Primary School was built in 1977 and expanded in 1981. The single story is constructed of concrete masonry with brick veneer and is located on 30 acres adjacent to the Hoover Ridge property owned by the County. In the summer of 2010, new concrete sidewalk at the main entry was installed.

Renovations began 2020. Madison Primary School offers pre-kindergarten through second grades. The school partners with Head Start to offer services for four year olds. Renovations were completed in Winter 2022.

School Data

Acreage: 30 acres

Square feet: 61,760

Proposed Projects:

- Parking Lot: Milling, Paving, Striping
- Replace oldest playground area

Waverly Yowell Elementary School

1809 Main Street, Madison, VA 22727

Phone 540-948-4511

<https://va02207963.schoolwires.net/wyes>



Waverly Yowell Elementary School was built in 1938, expanded in 1947, 1968, and renovated in 2000. Waverly Yowell Elementary School offers third, fourth, and fifth grades. It is a multi-level building of concrete masonry construction with brick veneer. The facility was originally built as a high school. Co-located on the site, in the former 'cafeteria' building, is our alternative education program.

School Data

Acreage: 14 acres

Square feet: 91,264

Proposed Projects:

- Parking Lot: Milling, Paving, Striping
- HVAC/Plumbing/Electric- CSLFRF Funding

William H. Wetsel Middle School
186 Mountaineer Lane, Madison, VA 22727
Phone 540-948-3783
<https://va02207963.schoolwires.net/wms>



William H. Wetsel Middle School was built in 1968 as the high school annex. The single story school was renovated and expanded in 1992, becoming the middle school. Wetsel Middle School offers sixth, seventh, and eighth grades. Main access to the school is off Mountaineer Lane, a state road which connects Route 29 and Fairgrounds Road, directly adjacent to and on the north side of the school. Staff and visitors parking on the front side of the facility must cross Mountaineer Road to access the building. Bus drop off for students occurs on the south side of the building, behind the high school, causing a very long uncovered walk for middle school students loading and unloading.

School Data

Acreage: 36.9 acres (MCHS and WWMS combined)
Square feet: 88,529

Proposed Project:

- Replace Gym Bleachers
- Replace Scoreboards
- Sidewalk Front Entrance (ADA Compliance)--to be corrected with paving project
- Parking lot milling, paving, striping

Madison County High School

68 Mountaineer Lane, Madison, VA 22727

Phone 540-948-3785

<https://va02207963.schoolwires.net/mchs>



Madison County High School was built in 1955 and expanded in 1959 and, 1968 with portions renovated in 1992. The agriculture shop/classroom and two story main building wing was added in 1991. Mechanical systems and plumbing were renovated in 2014. Madison County High School offers ninth, tenth, eleventh, and twelfth grades. In addition to academic and fine arts, the school offers career and technical courses and the Blue Ridge Virtual Governor's School.

The Madison County High School is located on the corner of Route 29 and Mountaineer Lane, at the south end of the Town of Madison. The High School shares a 37.2 acre site with the adjacent William Wetsel Middle School. Staff and visitors parking on the front side of the facility must cross Mountaineer Road to access the building. Bus drop off for students occurs on the south side of the building and is accessed from Fairgrounds Road. Several buildings are located behind the main high school building, including two stand-alone greenhouse structures, a modular classroom housing the cosmetology program and a metal building housing health classes. The site includes an athletic track and field, football stadium, with overlapping baseball field, an athletic fieldhouse and a multi-purpose athletic facility used for storage, wrestling, and baseball practice. Additional athletic fields are located across Fairgrounds Road on the Hoover Ridge Property, adjacent to the Madison Primary School.

School Data

Acreage: 36.9 acres (MCHS and WWMS combined)

Square feet: 101,411

Project Proposals:

- Asbestos Classroom Tile
- In Ground Storage Tanks (Fuel Oil Tanks)
- Thermal Window Replacement
- Parking Lot Milling, Paving, Striping
- Track Replacement
- Locker Restoration/Removal

Athletics and Field House

The 4,656 square foot field house was constructed 1974. The 2,640 square foot wrestling building was constructed in the mid 1990's. It is recommended that a design development phase to renovate or replace these structures begin in 2023-24.



Madison County Public Schools Administration Building

60 School Board Court, Madison, VA 22727

540-948-3780

<https://va02207963.schoolwires.net/Domain/4>



The Madison County Public Schools Administration Building was built in 1951 as an elementary school. Following the Waverly Yowell Elementary School renovation completion, the building was used for division administrative offices beginning in 2001.

School Data

Acreage: 14.5 acres

Square feet: 23,717

Project Proposals:

- Asbestos: Offices and Common Areas (to include hallway)
- ADA restrooms
- Parking Lot Milling, Paving, Striping
- Roof Replacement-ESSER
- Cafetorium to convert to expanded space for middle/high school PE classes and athletic teams HVAC-CSLFRF/ESSER
- Window Replacement

Madison County Public Schools Bus Shop

270 Mountaineer Lane, Madison, VA 22727

540-948-3780 ext. 6000

<https://va02207963.schoolwires.net/domain/75>



The Bus Transportation building, constructed in 1976, is a metal fabricated building located adjacent to the middle and high schools. The facility is used for bus repair and bus/vehicle parking. There is an adjacent vehicle fueling area, housing below-surface fuel tanks in a containment area and pumps with an overhead canopy.

Building Data

Acreage: 1.478 acres

Square feet: 2,442

Proposed Projects:

- Parking Lot Milling, Paving, and Striping
- Perimeter Fence replacement

Capital Improvement Plan: CIP Budget/Projections

During the 2017-18 school year, the school division conducted a facility condition assessment to determine building, facilities, and athletic conditions. Capital Improvement Plan committee members participated in several facility walk-throughs assessing conditions. Building level administrators were involved in the long-range plan which included facility recommendations. CIP Committee consists of representatives from the School Board and Board of Supervisors and county and school administrators. CIP Committee members regularly reviewed facility needs and funding, accomplishing several projects prior to this document's publication.

In the fall of 2018, the following scoring process was used to determine which projects were included in the ten-year plan. The proposed CIP for each building follows the building description.

CODES: An item may be scored with multiple codes.

- A Necessary or beneficial to safety, security, health, and or hygiene of students, staff, and/or parents.
- B Has a direct positive impact on the learning environment.
- C Improves operational, cost, and/or energy efficiency, and/or produces a positive return on investment. ADA compliance.
- D Enhances aesthetics, school and community pride.
- E Equipment or System Failure.